

Indzawo Optic Connect

Access switch connects to core switch



Access switch connects to core switch



Make sure the core switch is the root bridge, and enable portfast and BPDU guard on all access interfaces. Do your routing on the core switch, with an L3 transit to the firewall.



Each layer is served by specialized switches, with the access switch connecting end-user devices, the distribution switch aggregating traffic and enforcing policies, and the core switch acting as the high ...



What is the difference between access switch and core switch? The main difference is their role: an access switch connects end-user devices (like PCs) to the network, whereas a core ...



I would connect each 2960 to the 6500 if you had enough ports on the 6500. In my opinion if you connected each 2960 to each other with only one connected to the core, unless its the last ...



An access switch connects directly to endpoint devices such as desktop computers, VoIP phones, Wi-Fi access points, security cameras, and IoT sensors. It also connects upstream to a ...



Comprehensive guide to Core, Distribution, and Access Switches. Roles in the network and important parameters explained.



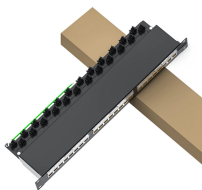
Similarly, the distribution switch lies in the distribution layer, and it links upwards to the layer core switch and downwards to the access switch. It is also called an ...



Access switches provide connectivity to end-user devices within a LAN, while core switches route data between different networks. Understanding the differences and similarities between access switches ...



Similarly, the distribution switch lies in the distribution layer, and it links upwards to the layer core switch and downwards to the access switch. It is also called an aggregation switch which functions as a ...



If the network includes a separate core layer, the distribution layer connects the access layer to the core. The following image shows how the distribution switches operate when a separate ...



The core switch is the backbone of your network. It's the most important piece of equipment because it connects all your other switches and routes traffic between them. The access ...

Contact Us

For more information, pricing, or custom solutions, please contact us:

Website: <https://www.indzawo.co.za>

Email: sales@indzawo.co.za

Phone: +27 71 296 8473

Address: 22 Quantum Street, Midrand, 1685, Gauteng, South Africa

This document is for informational purposes only. Specifications subject to change without notice.

