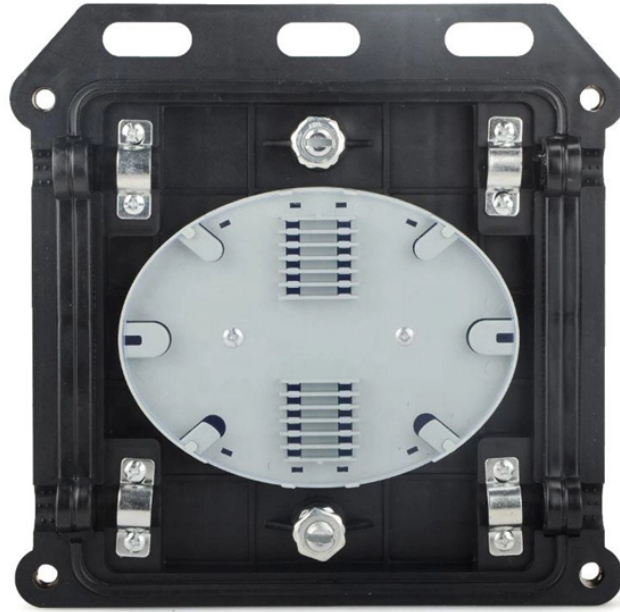


Access Switch Point Redundancy Configuration



Access Switch Point Redundancy Configuration



This section explains on how to configure heartbeat interval between the controller and the access points using a timeout value to reduce the controller failure detection time.



Both topologies provide redundancy and improve network resiliency. In the redundant RAP Ethernet daisy chain topology, each AP encapsulates a packet with a CAPWAP header and forwards it from ...



High availability minimizes link and node failures to minimize downtime by implementing link and node redundancy, providing alternate paths for traffic, and avoiding single points of failure.



For an end device (e.g. access points) to be fully redundantly connected and allow for a meaningful VPC configuration, it requires at least two Ethernet ports. This is because a VPC connection is always ...



Whether you're a network engineer or an IT enthusiast, understanding how to properly configure redundant switches will enhance your network's reliability and efficiency.



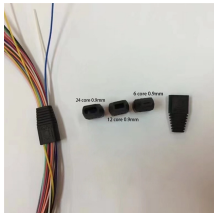
You can configure uplink, downlink and dual downlink (mesh relay) connectivity by manually configuring the port VLANs in the Mist portal. The AP47 employs passive failover detection based on link status ...



AP Redundancy is key to maintaining wireless networks. Let's look at how we can configure our APs to failover to additional controllers.



This guide provides information on the theory of operation and configuration for the Cisco Unified Wireless LAN Controller (WLC) as it pertains to supporting stateful switchover of access ...



Configuring the High Availability feature supports redundancy models with an active controller pair, or an active/standby deployment model with one backup controller supporting one or more active controllers.



The best option I found was to stack the switches and configure LAG groups that the servers can connect to with teamed NICs, one cable to each switch in the stack.



What is the correct way to configure redundant access switches? In our server rooms I have a stacked switch pair acting as a distribution switch for every other access switch in the room. I ...

Contact Us

For more information, pricing, or custom solutions, please contact us:

Website: <https://www.indzawo.co.za>

Email: sales@indzawo.co.za

Phone: +27 71 296 8473

Address: 22 Quantum Street, Midrand, 1685, Gauteng, South Africa

This document is for informational purposes only. Specifications subject to change without notice.

