

ASEAN Fire Protection Cable Tray Support Arm



ASEAN Fire Protection Cable Tray Support Arm



SFSP Cable Management Systems are designed to meet most requirements of cable and electrical wire installations and comply to local and international standards of fabrication and finishing.



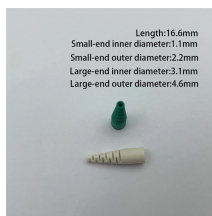
Cable Tray and Ladder are available in various Metallic Material such as Stainless Steel 304 / SS304, 316 / SS316, 316L / SS316L, Hot Dipped Galvanized HDG, GI Galvanized Zinc Plating, Aluminum, ...



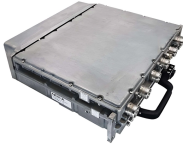
The foundation of the Fire Rated Heavy Duty Systems is the standard Kounis Group Ladder Tray coupled with specially engineered and designed side rail mounted Stringers which are fastened to ...



The EzyStrut range of fire rated cable tray and ladder offers continuous support for your cables along their entire lengths. They are formed with precision and engineered to maximise the strength ...



Ensure, that all cable management systems will withstand the loading without collapsing and causing obstacles on rescue routes. Choose fire resistant materials that do not cause toxic flue gases.



Tray support recommendations = system optimization = up to 50% supports removed Less supports = less design hours, less material, less installation = up to 65% ...



We now have a NEW range of fire rated cantilever assemblies for cable ladder and ET3 cable tray; expanding your choice when it comes to supporting your cables. Refer to the handy comparison ...



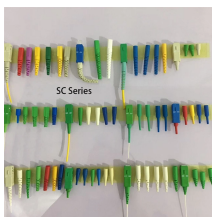
The mostly combustible cable sheaths and insulation allow a fire to spread along the cable at rapid speed. Our tested solutions for cable fire protection can delay the spread of fire in order to minimise ...



Cable tray is furnished as a system including all necessary fasteners, hold-down clips, splice plates, support systems, covers, hinged horizontal and vertical splice plates, elbows, reducers, tees, ...



41x21mm horizontal support for wall fixing of cable trays, electrical conduits and other heating pipe installations, A/C, fire protection systems, etc. Excellent loading capacity. Robust and secure system. ...



These fittings are used in conjunction with cable trays to support cables in ventilation holes, assist with directional change of piping systems, and aid cable channelling around obstacles.



These brackets are used to provide extra support to a horizontal run of channel. In addition to the cantilever arms listed, there are many other specialist support brackets for use with cable tray or ...

Contact Us

For more information, pricing, or custom solutions, please contact us:

Website: <https://www.indzawo.co.za>

Email: sales@indzawo.co.za

Phone: +27 71 296 8473

Address: 22 Quantum Street, Midrand, 1685, Gauteng, South Africa

This document is for informational purposes only. Specifications subject to change without notice.

