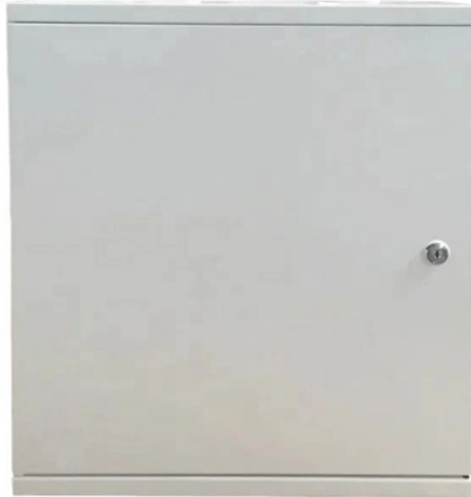


AI Server Capacity Status



Overview

This page aggregates the current status of the leading AI platforms. Some services are experiencing issues We are investigating increased API error rates in a single Availability Zone (mes1-az2) in the ME-SOUTH-1 Region. We are investigating issues with AWS services in the. By subscribing you agree to our Privacy Policy, the Atlassian Terms of Service, and the Atlassian Privacy Policy. Availability metrics are reported at an aggregate level across all tiers, models and error types. This dashboard is currently in preview and not all components or issues may be reflected. projects the global AI server market was valued at USD 128 billion in 2024. 65 billion in 2025 and is projected to reach USD 598.



AI Server Capacity Status



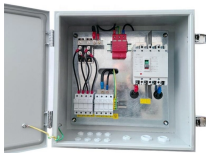
Welcome to Microsoft Foundry's home for real-time and historical data on system performance.



The region's advanced cloud ecosystem further boosts demand as cloud providers increasingly offer AI as a service, which relies on the deployment of high-capacity AI servers.



The AI server market was valued at USD 128 billion in 2024 and is expected to grow at a CAGR of 28.2% between 2025 and 2034, driven by the explosive enterprise AI adoption and proven return on ...



We're not aware of any issues affecting our systems. Availability metrics are reported at an aggregate level across all tiers, models and error types. Individual customer availability may vary depending on ...



Major cloud providers are actively building AI servers, accelerating the demand for AI chips and HBM. It is estimated that advanced packaging capacity will increase by 30-40% by 2024.



Welcome to Together AI status page for real-time and historical data on system performance.



Looking for a way to aggregate all your dependencies status in one place? Try IsDown.app. This page aggregates the current status of the leading AI platforms. Some services are experiencing issues. ...



Here we have compiled 60+ latest AI compute demand statistics on spending, server growth, supply constraints, data center capex and electricity demand. You can use these numbers to ...



Update - We are continuing to work to resolve the issues preventing users from accessing Claude.ai, and causing elevated authentication errors for requests to the API and Claude Code.



High-capacitance Multi-Layer Ceramic Capacitors (MLCCs) are entering a period of restricted availability as tier-one manufacturers divert production lines to support the rapid expansion ...

Contact Us

For more information, pricing, or custom solutions, please contact us:

Website: <https://www.indzawo.co.za>

Email: sales@indzawo.co.za

Phone: +27 71 296 8473

Address: 22 Quantum Street, Midrand, 1685, Gauteng, South Africa

This document is for informational purposes only. Specifications subject to change without notice.

