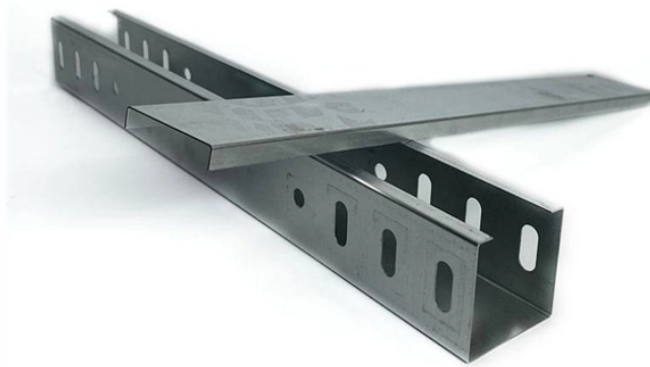


800150 Cable tray elbow



800150 Cable tray elbow



Horizontal elbows provide directional transitions in cable tray systems, with 4"-7" rail heights, 6"-36" widths, and 12"-36" radii. Available in ladder and solid bottom aluminum designs.



These cable tray fittings and accessories are essential for the seamless installation of an integrated cable management system, allowing for functions such as widening, heightening, connecting, and ...



It is designed for mechanical support and strain relief in long runs of cable and creates a smooth gradual bend for cable. Rail and stringer material is 16 ga steel tubing.



Hardware shall be zinc plated in accordance with ASTM B633 SC1 for pre-galvanized cable trays, or Chromium Zinc in accordance with ASTM F-1136-88 for hot dip galvanized cable trays.



Mill-galvanized steel elbow fitting for cable support, NEMA VE-1 tested.



The 45° Vertical Elbow is the perfect solution for installations that require the use of large diameter cables in long span situations. This elbow effectively narrows the tray width while seamlessly ...



The nVent CADDY Wire Basket Tray PreForm Elbow 90° is a precision ...



TechLine Mfg. manufactures long radius elbow fittings to enhance ease of use for Snap Track cable tray systems. These are available in vertical inside, vertical outside and horizontal configurations.



Ensure your cable tray solution is designed for your application, with our vast range of ladder tray fittings. Choose from the following: Horizontal elbows, Vertical elbows, Tees, Reducers, Cross ...



Choose from our selection of cable trays, including over 850 products in a wide range of styles and sizes. Same and Next Day Delivery.



The nVent CADDY Wire Basket Tray PreForm Elbow 90° is a precision-engineered solution designed to streamline cable tray installations when a directional change is needed.

Contact Us

For more information, pricing, or custom solutions, please contact us:

Website: <https://www.indzawo.co.za>

Email: sales@indzawo.co.za

Phone: +27 71 296 8473

Address: 22 Quantum Street, Midrand, 1685, Gauteng, South Africa

This document is for informational purposes only. Specifications subject to change without notice.

