

6cm Cable Tray Fixing Bracket



6cm Cable Tray Fixing Bracket



APPLICATION: connect & install cable tray system, splice tray sections when forming end-to-end connections, turns, reductions and intersections.
EASY TO USE: bolt cable trays together for custom ...



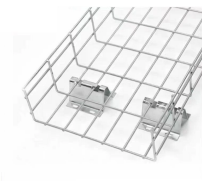
Made with chemicals safer for human health and the environment. Manufactured on farms or in facilities that protect the rights and/or health of workers. Discover more products with sustainability features. ...



Quest offers kits of cable tray accessories to allow mounting on the wall.



These fittings help in maintaining support of the cable tray system. Shop Graybar's collection of cable tray and fittings to find exactly what works for your job.



These special heavy duty tray hold down cable tray clamps and expansion guides are ideal for fastening tray to C-Channels and beams, such as those found on bridges.



APPLICATION: connect & install cable tray system, splice tray sections when forming end-to-end connections, turns, reductions and intersections. **EASY TO ...**



Choose from our selection of cable tray mounting brackets in a wide range of styles and sizes. Same and Next Day Delivery.



These are the most corrosion-resistant tray systems we offer for routing cable and hose in configurations such as curves, slopes, and tees. Cut, bend, and connect the wire mesh trays.



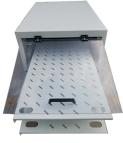
Channel and Tray offers durable and reliable end caps that effectively seal off cable tray ends, safeguarding cables from external contaminants and reducing the risk of cable damage. These end ...



Our Snap Track single hanger brackets & channel hangers are used for overhead or beam mounting when installed with a beam clamp. Contact us!



Cable Runway Wall Angle Support fastens ladder rack to a wall or other flat surface. This Wall Angle Support, LWASK24BLK item fits 24.00 with a material of Steel color Black.



Cable Tray, 2" Depth x 4" Width x 10" Section,
Material: Carbon Steel. Finish: Electroplated Zinc.

Contact Us

For more information, pricing, or custom solutions, please contact us:

Website: <https://www.indzawo.co.za>

Email: sales@indzawo.co.za

Phone: +27 71 296 8473

Address: 22 Quantum Street, Midrand, 1685, Gauteng, South Africa

This document is for informational purposes only. Specifications subject to change without notice.

