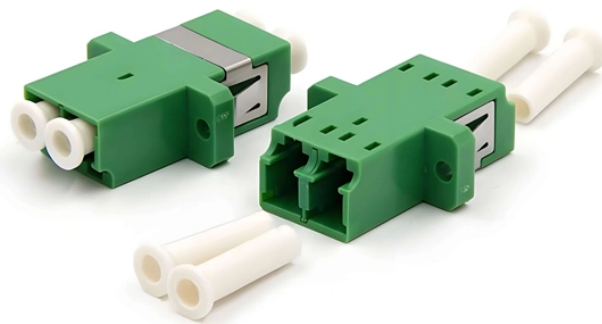


Indzawo Optic Connect

520 Laser Diode



520 Laser Diode



The part number is pre-loaded into this message / quote request.



Mouser offers inventory, pricing, & datasheets for 520 nm Laser Diodes.



These fiber coupled 520nm laser diodes are offered as stock items or associated with a CW or Pulsed Laser Diode Driver. They are compatible with our high speed nanosecond pulsed drivers or high ...



Our 520nm Green Laser diodes deliver vibrant, efficient output for research/biophotonics, industrial alignment and machine vision, and even display ...



View datasheets, pricing and availability from DigiKey now!



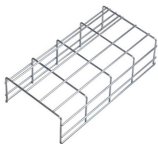
ams OSRAM offers a wide range of colored single-mode and multi-mode edge emitting Laser diodes for dedicated applications.



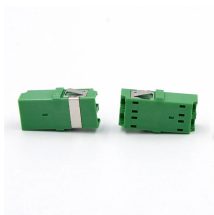
Our 520nm Green Laser diodes deliver vibrant, efficient output for research/biophotonics, industrial alignment and machine vision, and even display applications, outperforming 532nm DPSS lasers in ...



Operating the laser diode above the maximum rating even for very short periods of time can damage the laser diode or reduce its lifetime. The laser diode must be operated with a suitable power supply with ...



LASER TREE LASER TREE 520nm 500mW Green Fiber Coupled Laser Diode Sale price \$210.00 USD Regular price (/)



Pigtailed Laser Diode Modules are available with VIS and NIR wavelengths ranging from 405 to 1550nm, with output powers ranging from 1 to 100mW. Their plug and play operation make these laser diodes ...



QPhotonics offers a variety of single mode fiber pigtailed laser diodes in the wavelength range from 660nm to 1550nm in 14 pin DIL, Butterfly, mini DIL packages. Their output power varies from 1mW to ...

Contact Us

For more information, pricing, or custom solutions, please contact us:

Website: <https://www.indzawo.co.za>

Email: sales@indzawo.co.za

Phone: +27 71 296 8473

Address: 22 Quantum Street, Midrand, 1685, Gauteng, South Africa

This document is for informational purposes only. Specifications subject to change without notice.

