

500kWh Integrated Distribution Box for Railway Communication



500kWh Integrated Distribution Box for Railway Communication



This documents defines the interfaces between CBTC system and track side equipment on the Sub Surface Railway. This document is intended to define the interfaces with existing ...



From junction boxes to large custom signal enclosures, our instrument houses stand as the epitome of reliability, shielding vital equipment from the harshest of elements while ensuring the smooth and ...



ICEENG CABINET serves customers in 18+ countries across Africa, providing outdoor communication cabinets, power equipment enclosures, and battery energy storage cabinets for telecommunications, ...



The railpower box is the digital interface for your energy data collection and billing. For your individual requirements the railpower box is available in different versions.



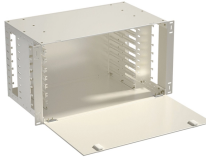
Here, the XGN15-12 Box-type Fixed Ring Main Unit plays a critical role in primary distribution, ensuring that power is safely stepped down and routed to the overhead catenary lines.



The 1 MWh lithium-ion battery storage system, BMS, energy storage monitoring system, air conditioning system, fire protection system, and power distribution system are centrally installed in a special box ...



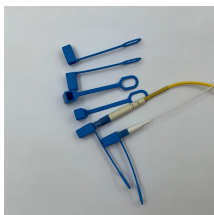
The 1 MWh lithium-ion battery storage system, BMS, energy ...



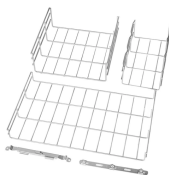
ABB's Smart Distribution solutions focus on enhancing the efficiency, flexibility, and reliability of electric distribution networks. These solutions aim to create more resilient and ...



Selected network components from our SCALANCE and RUGGEDCOM product lines ensure reliable and secure wired and wireless communication - on the train as well as trackside. These components ...



We design and manufacture custom electrical enclosures for the railway and tunnel sector, ensuring safety, reliability and long-term performance in the harshest environments.



EN 50155 covers all of the electronic equipment used for control, regulation, protection, diagnostics, and energy supply in rolling stock applications. The requirements placed on this equipment includes ...

Contact Us

For more information, pricing, or custom solutions, please contact us:

Website: <https://www.indzawo.co.za>

Email: sales@indzawo.co.za

Phone: +27 71 296 8473

Address: 22 Quantum Street, Midrand, 1685, Gauteng, South Africa

This document is for informational purposes only. Specifications subject to change without notice.

