

## 48-point fiber box process



### Overview

It integrates fiber splicing, splitting, distribution, storage and cable connection in one solid protection box. Manage fibers in a reasonable fiber radius condition. Easy to maintain and extend the capacity. What is a 48 Port Fiber Distribution Box?

A 48 port fiber distribution box, also known as a fiber optic patch panel or fiber termination box, is a housing unit. Any to learn the proper installation techniques are ideal for both residential MDUs and business-class environments. Built with an IP65-rated enclosure, this terminal box is designed to withstand harsh environments, making it suitable. The 48-Cores Outdoor Fiber Termination Box is a high-capacity, wall-mounted FTTH enclosure designed for reliable fiber termination, splicing, and distribution in outdoor and indoor access networks. With the function of the mechanical splice, fusion splice, light splitting.

## 48-point fiber box process



The 48-Core Fiber Terminal Box is a versatile, high-capacity ...



With support for up to 48 fiber cores, flexible LGX PLC splitter configurations, and standardized SC simplex adapters, the OTB-48C is widely deployed in FTTH last-mile networks, FTTx distribution ...



By implementing a 48 port fiber distribution box, you can gain significant advantages in managing your fiber optic network. From improved organization and protection to enhanced ...



48 Core fiber optic distribution box is able to hold up to 48 subscribers. It is used as a termination point for the feeder cable to connect with drop cable in FTTx network system. It integrates fiber splicing, ...



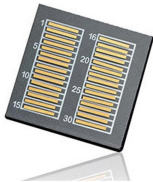
Fiber Identifiers Fault Locators Fiber Monitoring  
Fiber Optic Sensors Light Sources MPO Test  
Equipment OTDR & Software



FDB-48 Series 48 ports Fiber Distribution Box, also called Splitter Distribution Box or Fiber Terminal Box, can be used in FTTH projects and is suitable for corridor, basement, room, and building's outer ...



The FDB-48 Series 48-port Fiber Distribution Box is suitable for FTTH projects and can be used in corridors, basements, rooms, and on building exteriors. It has functions like mechanical splicing, ...



With lockable doors for added protection and a solid enclosure design to protect fiber terminations from damage, the FieldSmart Fiber Delivery Point (FDP) Wall Box product line provides superior fiber ...



The 48 Core Indoor Fiber Termination Box plays a critical role in data centers by facilitating the efficient management and distribution of fiber optic connections.



scale from 12 to 48 ports with the industry standard adapter of choice. Ring cut or mid-span capabilities allow distribution cables to be daisy-chained and for fiber hand-off through the riser, while a swinging ...



The 48-Core Fiber Terminal Box is a versatile, high-capacity solution for FTTx applications, offering secure splicing, distribution, and durable protection.

## Contact Us

For more information, pricing, or custom solutions, please contact us:

Website: <https://www.indzawo.co.za>

Email: [sales@indzawo.co.za](mailto:sales@indzawo.co.za)

Phone: +27 71 296 8473

Address: 22 Quantum Street, Midrand, 1685, Gauteng, South Africa

This document is for informational purposes only. Specifications subject to change without notice.

