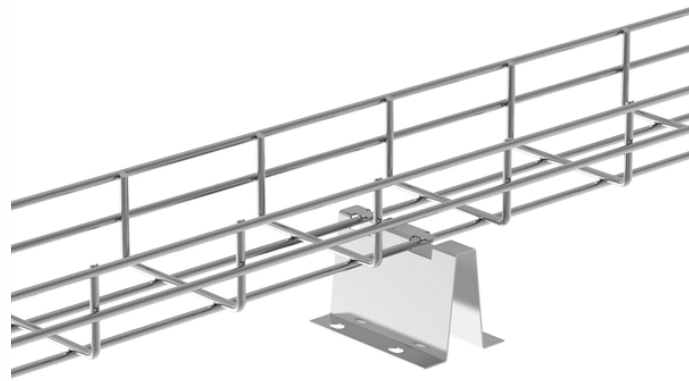


35kV Relay Protection Scheme Design and Setting



35kV Relay Protection Scheme Design and Setting



Effective relay protection in HV/MV substations requires a thorough approach encompassing calculations, precise settings, meticulous coordination, informed relay selection, and ...



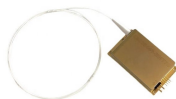
The settings of the instantaneous elements, and the TAP and DIAL settings of the relays to guarantee a coordinated protection arrangement, allowing a discrimination margin of 0.4 seconds



A number of bus protection schemes are presented; their adequacy, complexity, strengths, and limitations with respect to a variety of bus arrangements are discussed; specific application ...



3.2 Strengthening Management Relay In order to prevent relay “three false” accident, should strengthen the relay management value management as an important element which should ...



As the protected components of the electrical systems have changed in size, configuration and their critical roles in the power system supply, some protection aspects need to be revisited (i.e. the use of ...



Protection systems are only one of several factors governing power system performance under specified operating and fault conditions. Accordingly, the design of such protection systems must be clearly ...



This handbook covers the code of practice in protection circuitry including standard lead and device numbers, mode of connections at terminal strips, colour codes in multicore cables, dos ...



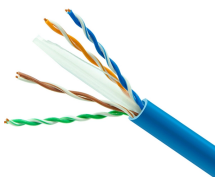
Because the protection areas of the interlocking-based protection concept are not overlapping and because they do not reach into the protection area of the next relays in the protection chain, a ...



This paper mainly introduces the relay protection device of subway 35 kV power supply system.



Distance Protection relay is designed to operate only for faults occurring between the relay location and the selected reach point. Principle involves the division of the voltage at the relaying point by the ...



In this Project, I develop a Protection Scheme for Transmission Line Using Different Relay configurations. - Design-of-35kV-Transmission-Line-Relay-Protection/Design of 35kV Transmission ...



Thus, it is necessary to develop adaptive relay protection systems that would take into account all possible variations in the operation modes of the distribution network, generating stations, and ...

Contact Us

For more information, pricing, or custom solutions, please contact us:

Website: <https://www.indzawo.co.za>

Email: sales@indzawo.co.za

Phone: +27 71 296 8473

Address: 22 Quantum Street, Midrand, 1685, Gauteng, South Africa

This document is for informational purposes only. Specifications subject to change without notice.

