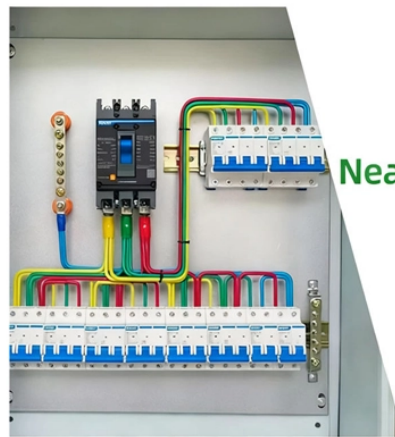


2 Electrical and 2 Optical Ring Network Fiber Optic Switches

DETAILS DISPLAY



Focus On Every Detail



01

Neat & Clean
Layout



Cleaner arrangement
of components,
Easy to operate

Overview

Fiber Optic Cables – Single-mode fibers are most common for long-distance, high-speed transmission. Network Nodes – Connection points the fiber ring passes through. What Is a Fiber Optic Ring Network?

A fiber optic ring network is a physical or logical network topology where devices (usually switches) are. The fiber optic ring redundancy design for industrial Ethernet switches is precisely engineered to address this pain point—achieving millisecond-level fault self-healing through the synergy of physical ring architecture and intelligent protocols, thereby constructing the "self-healing heart" of. The TC3340 Redundant Gigabit Ethernet Switch Substation is a rugged, cost-effective networking solution for both industrial and commercial fiber networks. It offers a wide range of advanced networking features including Self-Healing Ring capability, VLAN, QoS, Rate Limiting, Management, Security. Ring Network Gigabit PoE Switch is a flexible solution to increase efficiency and stability for power and network transmission in the long distance PoE networking system. Understanding fiber rings and related terms is crucial for anyone involved in network design. Check each product

page for other buying options.

2 Electrical and 2 Optical Ring Network Fiber Optic Switches



To go to a hub and spoke network design at this time would be VERY expensive, as it would require different core switch, plus all new fiber cabling. So I'm trying to figure out a way to do ...



The TC3340 is a compact Gigabit Switch solution for both industrial automation and commercial networks because it offers a wide range of advanced networking features including Redundancy, ...



Modern fiber rings include intelligent switches that detect a fault instantly and redirect traffic without interruption. Each node (building, business, cell tower, etc.) is connected to the ring. ...



Estink SFP Ethernet Fiber Optic Switch, 1000m Ethernet Fiber Optic Transceiver, 4 Optical Ports 2 Electrical Ports, 120km, with LED Indicator, Supports 9k Bytes Jumbo Frames



We offer solutions that provide seamless transmission and conversion from Ethernet media to multimode or singlemode fiber. Our Ethernet network switches with fiber ports comes in managed or ...



Switches range from 2 to 6 ports, speeds up to 10/100/1000. Temperature hardened and low port count ideal for linking multiple RTUs & PLCs in industrial and SCADA fiber optic networks.



Learn how to design a fiber optic ring network with practical diagrams, topologies, and switch setup tips. Explore ring network switch options for industrial applications.



A fiber optic ring is a network topology where fiber optic cables form a loop or ring. Each node (switch, router, or other network devices) is connected to two other nodes, forming a closed-loop structure.



It also supports 2 Gigabit dedicated SFP slots, providing flexible connection option with fiber optic link to meet various demands of long distance deployment. More importantly, compared with other ring ...



The workshop deploys two independent fiber optic ring networks (Ring A and Ring B), each containing eight USR-ISG-8G industrial switches interconnected over 10 kilometers using 10G single-mode ...

Contact Us

For more information, pricing, or custom solutions, please contact us:

Website: <https://www.indzawo.co.za>

Email: sales@indzawo.co.za

Phone: +27 71 296 8473

Address: 22 Quantum Street, Midrand, 1685, Gauteng, South Africa

This document is for informational purposes only. Specifications subject to change without notice.

