

1G LPO optical module for backbone network



Overview

1000BASE SFP transceiver designed for long-range communication up to 20km over LC duplex SMF. This optical module features a 1310nm FP laser transmitter, providing stable and efficient data transmission ideal for ISP backbones, enterprise LAN & SAN networks, and data center. As backbone networks march toward full 400G deployment, data centers are already racing to adopt 800G and even 1.6T optical infrastructure to meet the surging demand for high-bandwidth, low-latency data transmission. However, this leap in speed has brought forth critical challenges that threaten to. However, selecting the right 1G SFP module is far more complex than simply choosing a “1 Gbps” optic. Network engineers and procurement teams must consider multiple variables, including transmission distance, fiber type, wavelength, equipment compatibility, operating environment, and total cost of. It is a module that intelligently adapts to the needs of network administrators. In a simple way, you will connect devices from different manufacturers. You will find. Luxshare-Tech collaborates with industry's leading optoelectronic ICs to develop optical interconnect products based on silicon photonic engine technology, providing end-to-end support and services for next-generation

wireless communications, data centers, cloud computing, HPC and more.
Signal equalization and compensation.

1G LPO optical module for backbone network



Complete guide to optical transceivers covering 1G to 800G architecture, QSFP/OSFP form factors, silicon photonics, DSP technology, and data center deployment strategies.



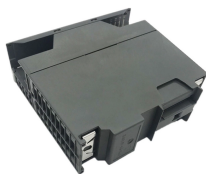
Juniper's portfolio of qualified 10G and 1G optical transceivers are low-cost multipurpose modules available in footprint-optimized form factors for deployment across ACX, EX, MX, PTX, and QFX ...



Get the highest quality, performance-leading optical transceivers for any network architecture. Find the transceiver model to fit your network.



This optical module features a 1310nm FP laser transmitter, providing stable and efficient data transmission ideal for ISP backbones, enterprise LAN & SAN networks, and data center applications.



Learn how to choose the right 1G SFP module for your network. Our guide covers compatibility, distance, fiber type, cost, and vendor selection for optimal performance.



Our optical modules feature traditional DPO, low-power LRO, LPO, and Active Loopback designs for testing, and support data rates from 10G up to 1.6T across a wide range of package types.



We offer optical modules supporting speeds from 1G to 400G, ideal for expanding network infrastructure in data centres and telecom operators. Find out how easy it is to connect equipment from different ...



This guide delves deep into LPO optical transceiver modules, explaining what they are, how they work, their key advantages, current limitations, and why they're poised to become a game ...



Featuring low power consumption, this industrial optic transceiver provides 1G BASE Ethernet connectivity options for Gigabit Ethernet, Telecom and Data Centers, suitable for both outdoor and ...



NPO, or Near-Packaged Optics, is a highly integrated optical interconnect solution that falls between traditional pluggable optical modules and CPO.

Contact Us

For more information, pricing, or custom solutions, please contact us:

Website: <https://www.indzawo.co.za>

Email: sales@indzawo.co.za

Phone: +27 71 296 8473

Address: 22 Quantum Street, Midrand, 1685, Gauteng, South Africa

This document is for informational purposes only. Specifications subject to change without notice.

