

10kV Single Busbar Sectional Incoming Line



10kV Single Busbar Sectional Incoming Line



The single bus-bar system has the simplest design and is used for power stations. It is also used in small outdoor stations having relatively few outgoing or incoming feeders and lines.



This catalog includes information on features, construction, application, installation, electrical data, busbar configuration, wiring diagrams, and dimension drawings for Busway Systems.

An Extensive Library of Self-Developed Products



This guide provides a detailed technical description, calculations, design considerations, and best practices for designing busbar systems in substations. We will also cover examples, ...



This is a single bus system, with additional circuit breaker and isolators, making two different sections of bus, hence called a single bus system with bus sectionalizer.



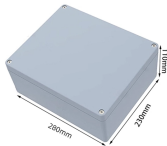
Find top manufacturers & competitive prices for 10KV/11KV/12KV/15KV incoming line switchgear. Explore high-voltage solutions for smart grids, compliant with IEEE/GB standards.



The single bus is the simplest substation topology: every incoming and outgoing circuit connects to one common bus through its own circuit breaker and isolators.



This technical course explains in details power substations using the single bus scheme with bus section circuit breakers. You will be introduced to the use of protective grounding when ...



This document discusses different bus bar configurations used in substations and provides examples of each. It begins by explaining that bus bars interconnect incoming and outgoing feeders and their ...



This document discusses different bus bar configurations used in substations and provides examples of each. It begins by explaining that bus bars interconnect ...



The figure just below shows a single bus bar with a sectionalizing arrangement. The scheme works best when the incoming and outgoing circuits are distributed evenly across the sections.



The utility model relates to an electric power distribution technical field, in particular to conveniently expand 10KV single bus segmentation main junction of outlet cabinet.

Contact Us

For more information, pricing, or custom solutions, please contact us:

Website: <https://www.indzawo.co.za>

Email: sales@indzawo.co.za

Phone: +27 71 296 8473

Address: 22 Quantum Street, Midrand, 1685, Gauteng, South Africa

This document is for informational purposes only. Specifications subject to change without notice.

