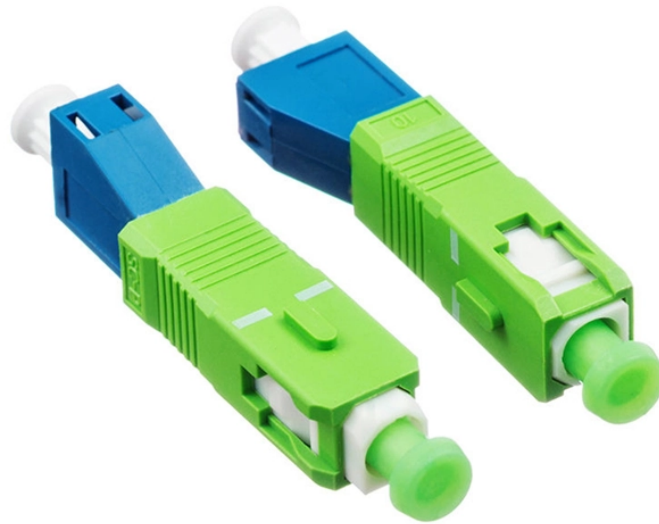


108-core fiber optic patch panel



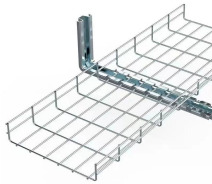
108-core fiber optic patch panel



CommScope's FPX series fiber panels are available to be shipped with factory installed adapter packs and/or preterminated pigtail assemblies which simplifies the ordering process and reduces ...



Our fiber patch panel offers options for flexible cable management and seamless integration with various cassettes and fiber optic accessories.



During this free webinar, we will discuss different fiber cables types, appropriate applications for each type, the mechanics of performing a Tier I test on fiber optic cable and calculating a loss limit for ...



FS offers FHD® FAPs and FHU™ 1U fiber patch panel with LC, SC, MTP®/MPO connectors in singlemode/multimode fiber to deploy medium for high-density fiber optic network applications.



Yingda professional high density fiber optic patch panels with 108 SAN ports in 1U. MPO breakout. Reliable solution for data center fiber management.



PRODUCT PACKAGING • Panels are individually boxed complete with the internal cable management kit as standard.



Deep Dive: Evolving Mechanics of the Fiber Optic Patch Panel At its core, a fiber optic patch panel is a structured enclosure designed to terminate, route, and protect fiber optic cables. It ...



Explore fiber patch panels for network infrastructure. Find LC, SC, and ST connector options for your telecommunications or data center needs.



Discover high-quality fiber optic patch panels from Foss - designed for flexibility, scalability, and easy installation in data centers and communication networks.



We offer multiple fiber optic patch panels including LC, ST, SC, FC, MTRJ, and MPO connector options. Our 19-inch rack-mount panels are constructed from .06 cold-rolled steel with durable black powder ...

Contact Us

For more information, pricing, or custom solutions, please contact us:

Website: <https://www.indzawo.co.za>

Email: sales@indzawo.co.za

Phone: +27 71 296 8473

Address: 22 Quantum Street, Midrand, 1685, Gauteng, South Africa

This document is for informational purposes only. Specifications subject to change without notice.

